

What's New in WebLOAD 10.1

Version Compatibility Information

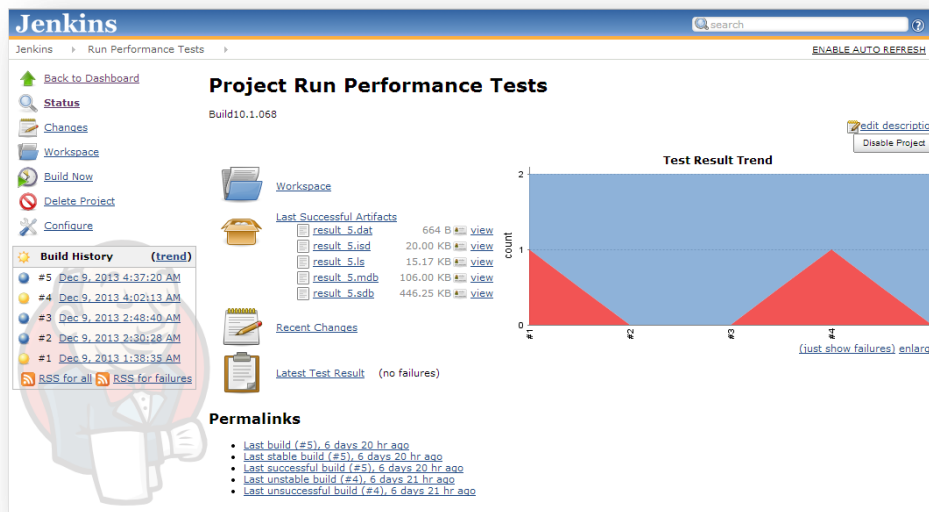
WebLOAD 10.1 is compatible with all load testing scripts (Agendas) that were created using WebLOAD version 8.0 or higher.

Version 10.1 highlights

Continuous Integration with WebLOAD

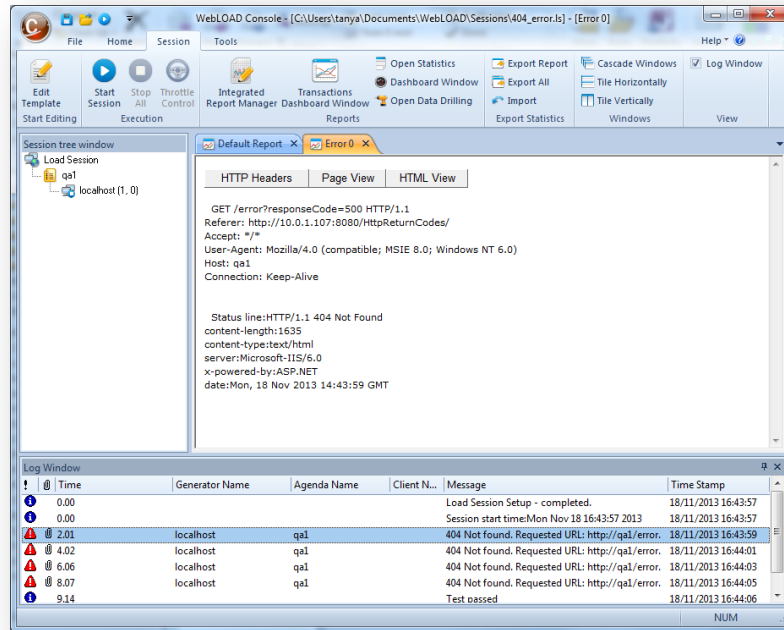
You can now automatically perform load and performance testing as part of your continuous integration initiative using WebLOAD. By performing automated load testing early and often, you can identify and resolve performance issues during the development process, when they are easiest to fix.

The WebLOAD plug-in for Jenkins makes your performance testing as agile as your product development. The Jenkins server can automatically launch WebLOAD whenever a new build is triggered. WebLOAD's regression and trend reports enable you to accurately pinpoint where the problem started and to associate code changes with performance issues.



Full View of HTTP Errors

It's now easier to understand HTTP errors that occur during test execution. WebLOAD features a detailed, graphical drill-down view of an error from within the execution log including HTTP Headers, Page View, and HTML View.



Command Line Enhancements

For easier license management and more powerful test automation, you can now request virtual client and probing client resources from the WebRM license server from the WebLOAD command line.

Support for Very Large Sessions

WebLOAD 10.1 has been enhanced to support even larger load sessions. It's now possible to run the load test with thousands of performance statistics for very long periods of time without reaching data limits.

Statistics Chart Performance Improvements

The WebLOAD Console statistics charts' performance has been improved to handle more statistics efficiently. WebLOAD continues to store all data no matter how long the load session and enables you to display as much data as you need.

WebLOAD Test Development Environment Enhancements

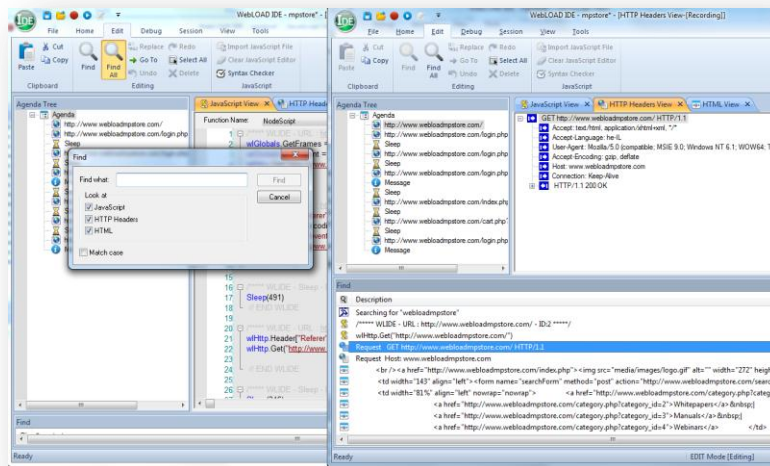
In WebLOAD 10.1 the Interactive Development Environment has been improved and several features requested by our customers have been added.

Enhanced Correlation Engine

The enhanced correlation engine enables you to benefit from automatic correlation at any time without losing manual changes that you made to test scripts. WebLOAD 10.1 features an intelligent tool for reconciling conflicts that occur during the correlation process as a result of manual script editing.

Enhanced Search

The WebLOAD IDE now supports comprehensive search across all script views in one click. You can search at the same time in JavaScript, HTML, and HTTP Header views. Clicking on the search result will highlight the exact location in the relevant script view.



Enhanced Text Validation

The Validation Engine has been improved to allow multiple text verifications for assuring the correct server response.

Enhanced REST API support

WebLOAD 10.1 automatically supports recording and playback of all methods of REST APIs.

Platforms – Internet Explorer 10, Windows 8

WebLOAD 10.1 fully supports Windows 8 and Windows Server 2012 operating systems and can record/playback Internet Explorer 10.

Installation

For more powerful automation, WebLOAD now can be installed from the command line without any user interaction.